



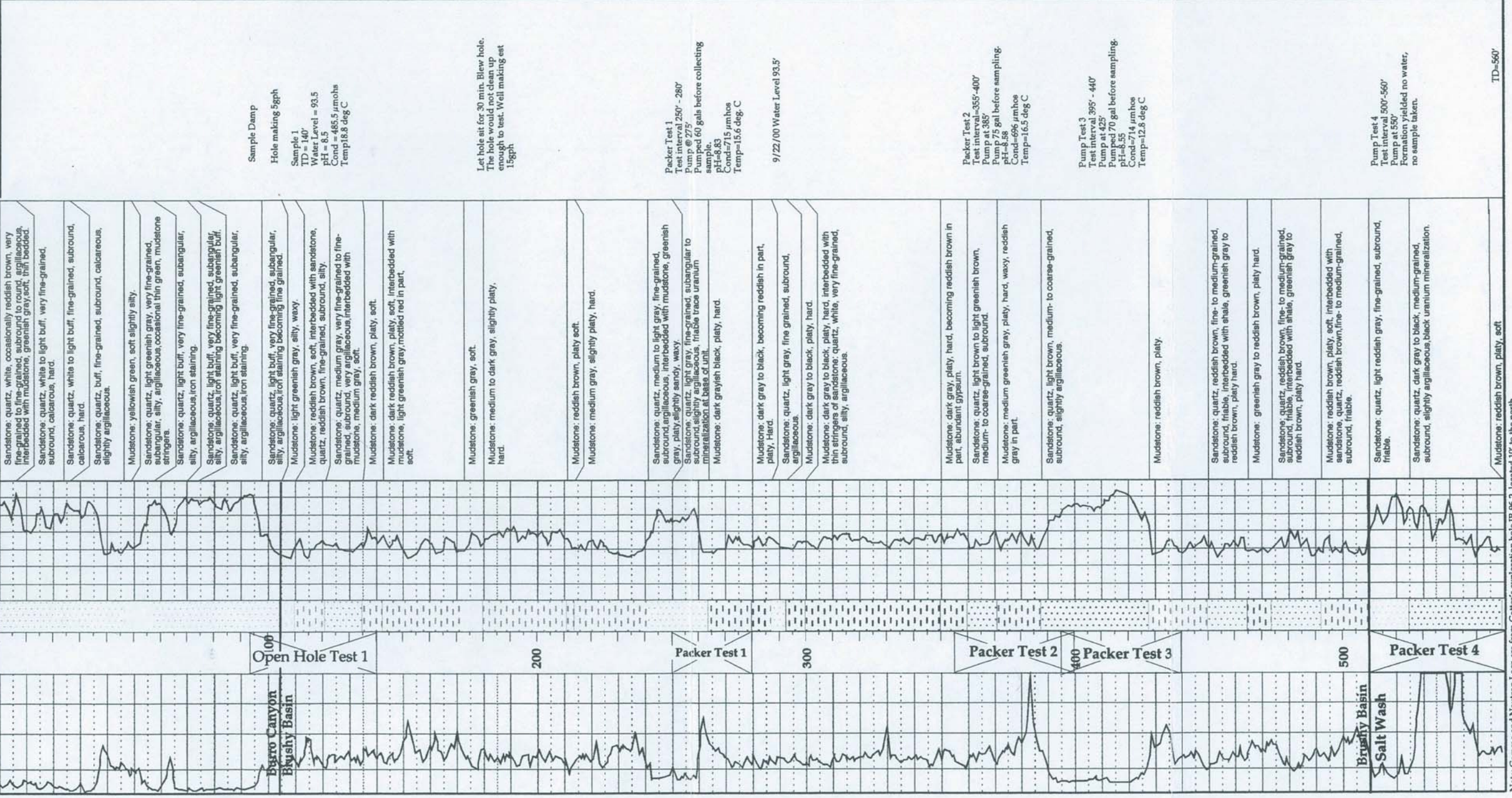
Bore Hole No.
BM00-1

Location:
SW 1/4, SE 1/4, Sec. 35, T51N, R20W
Mesa County, Colorado

T. D. = 560
Geologist: F.A.P.

Project: Beaver Mesa
Date: 10/15/00
Surface Elev. 7415
Depth to Water: NA

Gamma (Nat) 0 100
Neutron - API 0 700



Comments

Sample Damp

Hole making 5gph

Sample 1
TD = 140'
Water Level = 93.5
pH = 6.5
Cond = 485.5 µmhos
Temp = 18.8 deg C

Let hole sit for 30 min. Blew hole. The hole would not clean up enough to test. Well making east 15gph

Packer Test 1
Test interval 250' - 280'
Pump @ 275'
Pumped 60 gals before collecting sample.
pH=8.83
Cond=715 µmhos
Temp=15.6 deg. C

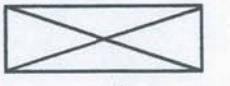
9/22/00 Water Level 93.5'

Packer Test 2
Test interval=355'-400'
Pump at 385'
Pump 75 gal before sampling.
pH=8.58
Cond=696 µmhos
Temp=16.5 deg C

Pump Test 3
Test interval 395' - 440'
Pump at 425'
Pumped 70 gal before sampling.
pH=8.55
Cond=714 µmhos
Temp=12.8 deg C

Pump Test 4
Test interval 500'-560'
Pump at 550'
Formation yielded no water, no sample taken.

TD=560'



Test Interval

Note: Gamma and Neutron Logs are from Cotter's exploration hole JB-96-2, located 10' to the north