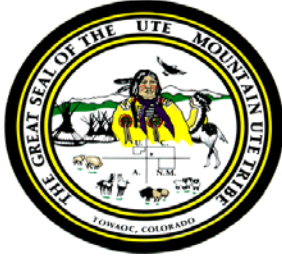


Exhibit K

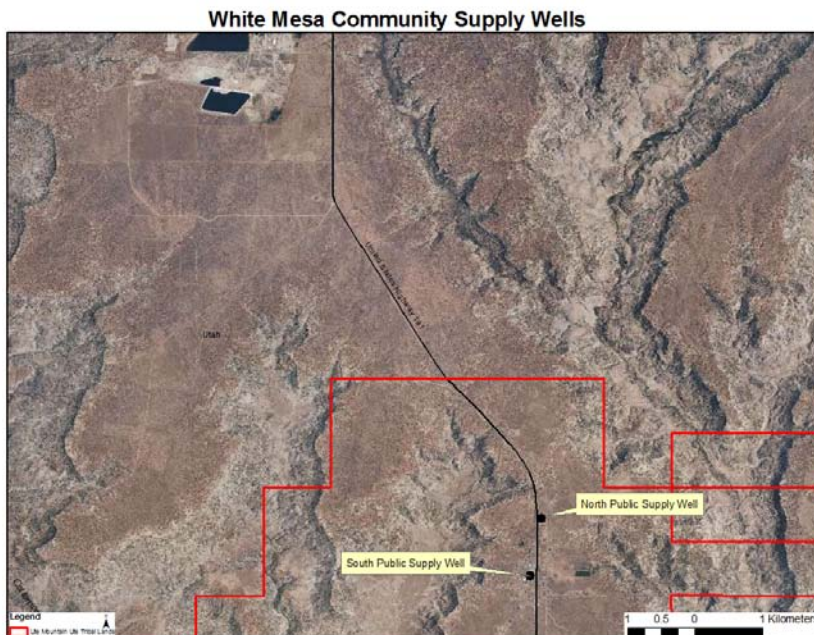


UTE MOUNTAIN UTE TRIBE
ENVIRONMENTAL PROGRAMS DEPARTMENT

Exhibit K to December 16, 2011 Comments on DUSA RML Renewal
Re: Description of the White Mesa Water System

The White Mesa Community water system has two deep supply wells in the Navajo Formation. The Navajo Formation begins at approximately 900-1000 feet depth on this part of the mesa, based on well driller's reports and local knowledge. (Randee Bayles, 2011). The two wells are connected to a 4-inch water main that connects two 100,000 gallon storage tanks to the distribution system. The tanks can be isolated individually or run in parallel.

The north well has a total depth of 1515 feet, with some obstructions below 1300 feet. There is a slotted casing from a depth of 1039 to 1153 feet. The pump is rated at 30 GPM and the static water level is approximately at a depth of 445 feet. (Randee Bayles, 1997). The south well has a total depth of 1726 feet. The casing goes to a depth of 1277 feet. The pump is rated at 30 GPM and the static water level is approximately 483 feet. (Randee Bayles, 2001).



Scott Clow, Colin Larrick, 2011